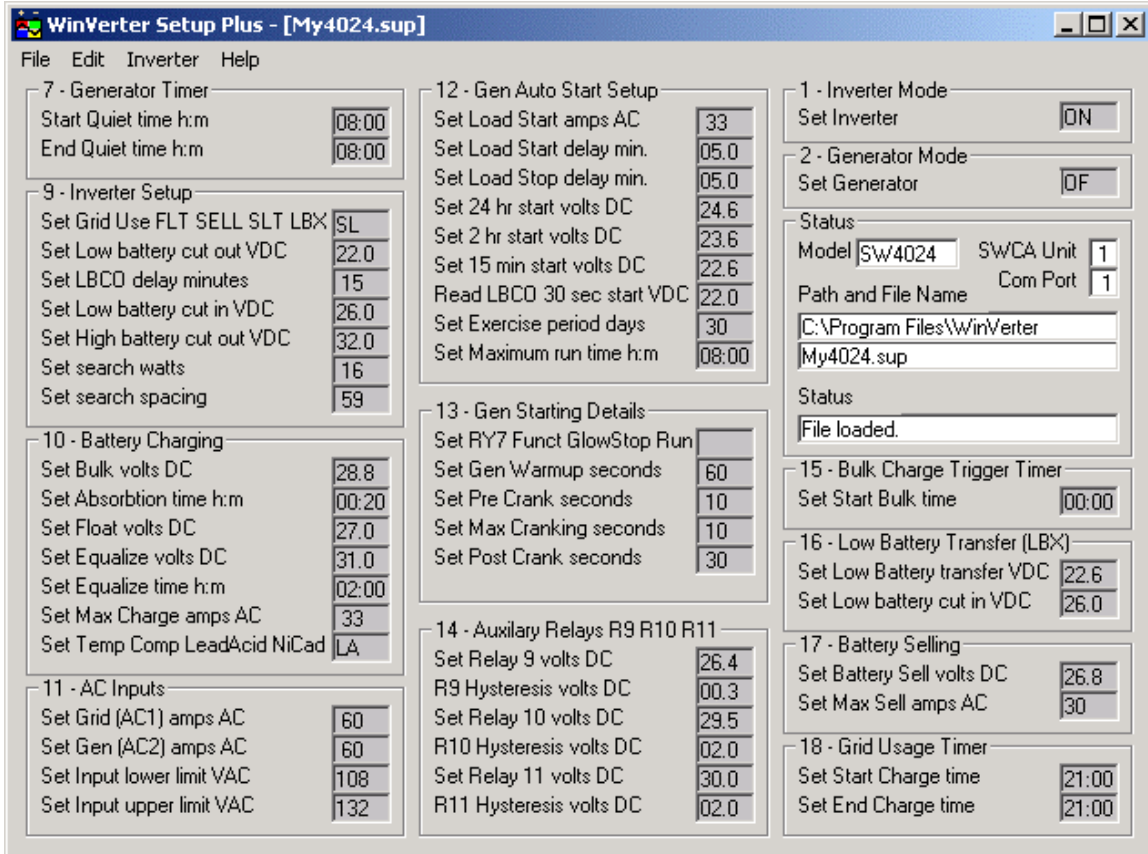


At last there is an easy way to manage the programming of the XantrexTrace™ SW & PS-series Inverter/Chargers.

WinVerter™ Setup Plus is a Windows®-based PC software application that allows you to display and write the setup menu

parameters of the inverter, load and save them to disk file, and print them.

Now system installers (Wrenches) can program new installations in just a few minutes, and savvy users can make seasonal changes with ease and accuracy.



Feature	Benefit
<ul style="list-style-type: none"> Windows®-based. 	<ul style="list-style-type: none"> Operates on commonly available PCs and laptops.
<ul style="list-style-type: none"> Displays all parameter values on a single screen. 	<ul style="list-style-type: none"> Allows the user to see parameter interactions.
<ul style="list-style-type: none"> Automated communications with inverter takes 30 seconds to a few minutes to transfer Setup values. 	<ul style="list-style-type: none"> Save valuable time compared to manual editing from the inverter control panel.
<ul style="list-style-type: none"> Save and load from disk file. 	<ul style="list-style-type: none"> Makes reprogramming easy and accurate, helps manage multiple inverters and seasonal changes.
<ul style="list-style-type: none"> Provides a Control Panel display. 	<ul style="list-style-type: none"> Allows full remote control of the inverter and generator from your PC.
<ul style="list-style-type: none"> Sets Inverter time clock. 	<ul style="list-style-type: none"> Makes time correction easy especially during daylight savings changes.

Read a Wrench review of WinVerter-Setup at <http://www.mrsharkey.com/wrenches/winvrter.htm>

Underline indicates new features

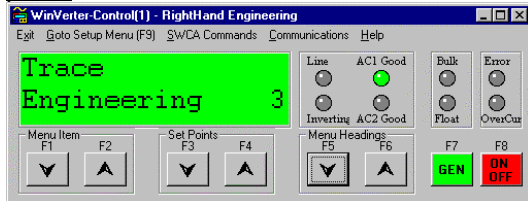
Communications

Using the Xantrex Trace SWCA Communications Adapter, *WinVerter-Setup Plus* allows you to manage all 45 programmable parameters in the Setup Menu of the inverter (menus 9 thru 18), plus the inverter and generator mode (menus 1 & 2), generator quiet time (menu 7) and inverter clock (menu 6).

Writing and reading these parameters to/from the inverter takes as little as half a minute (time varies based on current and revised value differences, but usually not more than a few minutes).

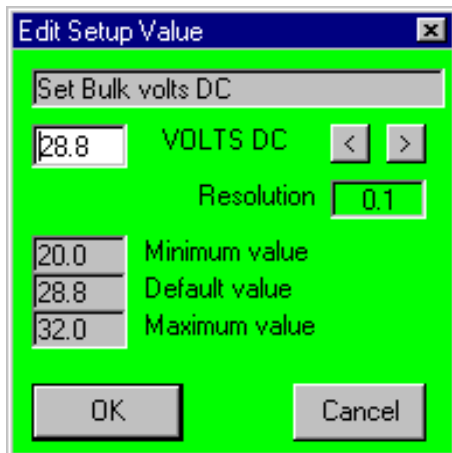
Control Panel

WinVerter-Setup Plus can be used to startup WinVerter-Control 1.10 (freeware) without leaving Setup Plus. This gives you the same controls and displays on your PC as are found on the SW inverter's control panel.



Clock Setting

A user-configured option permits the inverter time clock to be synchronized with the PC's clock during writes. Thus daylight savings changes are easy to accomplish.



Edit Window

Editing

All parameters and their titles are displayed on the screen at the same time. Parameter values are easily changed through the edit window which shows the minimum, default and maximum values.

File Operations

Edited values or those read from the inverter may be saved in a user-named disk file. Later, a saved file may be reloaded and written to an inverter. Parameters may also be printed for hard copy. This makes it easy to manage multiple inverters

File operations are disabled in evaluation versions of the software.

AutoWrite

The auto-write command line feature allows a single command to start the program, load the specified inverter setup file, write the file contents to the inverter, and terminate of the program.

Inverter Models

User-selectable inverter properties permit selection between several Trace SW & PS-series inverter models (e.g. 2512, 4024, 4048).

PC System Requirements

- Processor: 486 or equivalent minimum.
- Operating System: Windows 95 or later (including 2000 and XP).
- Video Display: VGA or better. Color recommended.
- Removable Disk: Multi-read CD-ROM drive.
- Fixed Disk Memory: 10 MB of free space minimum.
- Serial Ports: One free RS-232 port (9-pin recommended) minimum.

Inverter Requirements

- SW Version: 4.01 thru 4.20 software.
- PS Version: 5.0 thru 5.1 software.
- SWCA Version: 1.01 thru 1.02 software.
- Tested Models: PS2512, SW2512, SW4024, SW4048, SW5548, SW3024A, SW3024E. All other models will work also, but some may require simple field modification of supplied computer files.

Trace is a trademark of Xantrex Technology, Inc.
Windows is a registered trademark of Microsoft Corporation